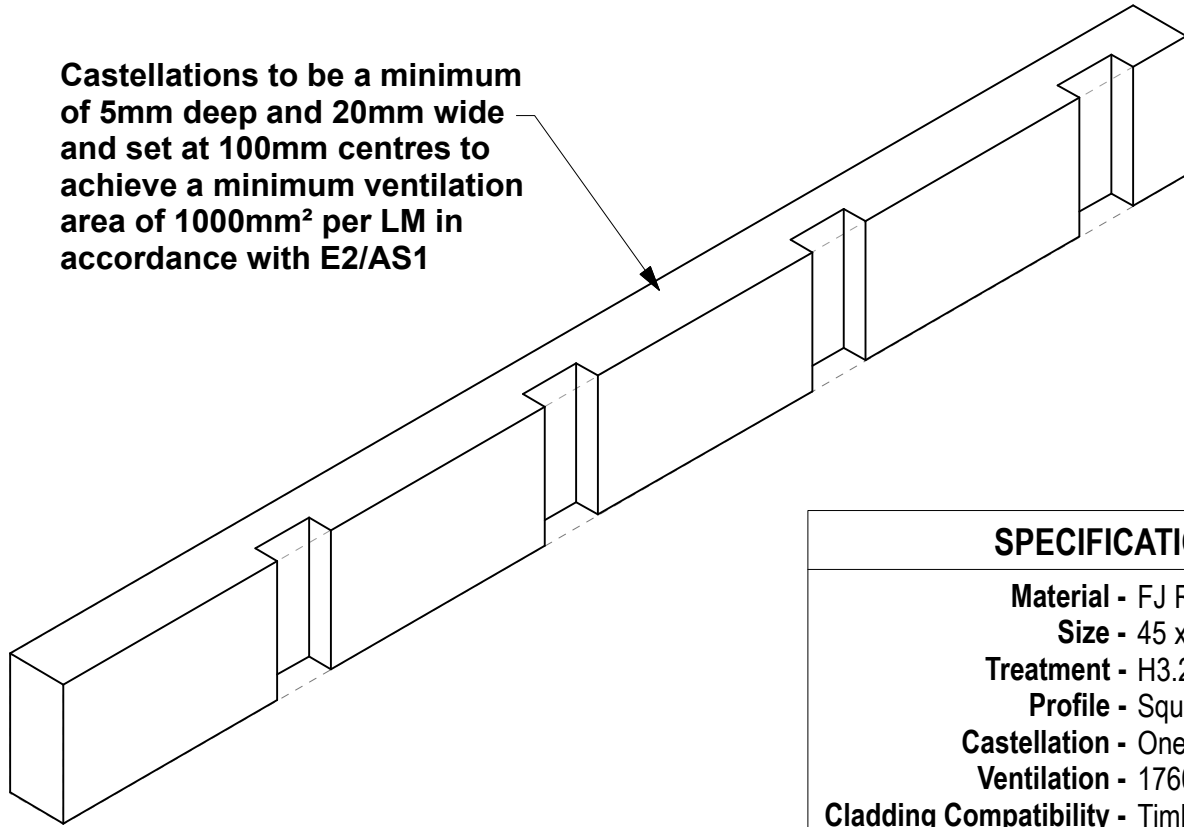
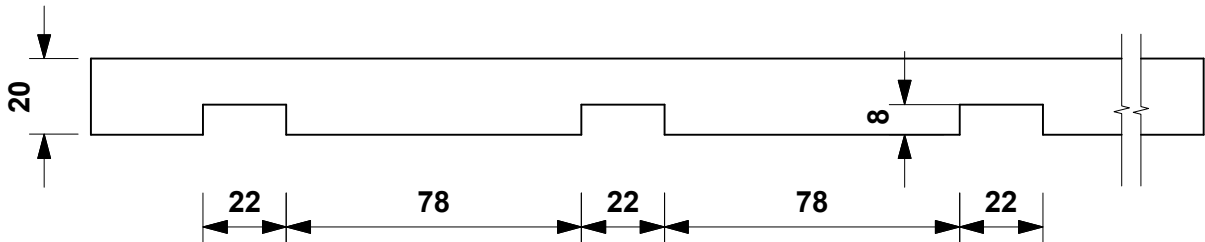


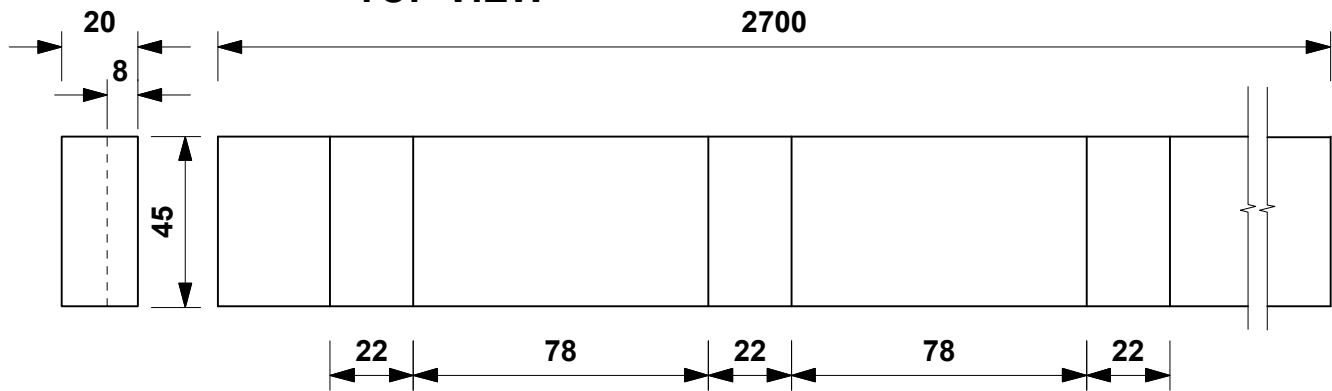
Castellations to be a minimum of 5mm deep and 20mm wide and set at 100mm centres to achieve a minimum ventilation area of 1000mm<sup>2</sup> per LM in accordance with E2/AS1



SPECIFICATIONS	
Material	- FJ Radiata Pine
Size	- 45 x 20mm
Treatment	- H3.2 CCA
Profile	- Square
Castellation	- One Face
Ventilation	- 1760mm <sup>2</sup> per l/m
Cladding Compatibility	- Timber



TOP VIEW



END VIEW

SIDE VIEW

DO NOT SCALE OFF THIS DRAWING

**EBR**

ROOFING BATTEN

**EZYScribe PRODUCTS**  
 38 ANVIL ROAD  
 SILVERDALE  
 AUCKLAND  
 TEL 09 424-8109



**CASTELLATED TIMBER CAVITY BATTEN**

*2.7m lengths*

**EZYScribe**  
 PRE-CUT SCRIBER & CAVITY BATTEN