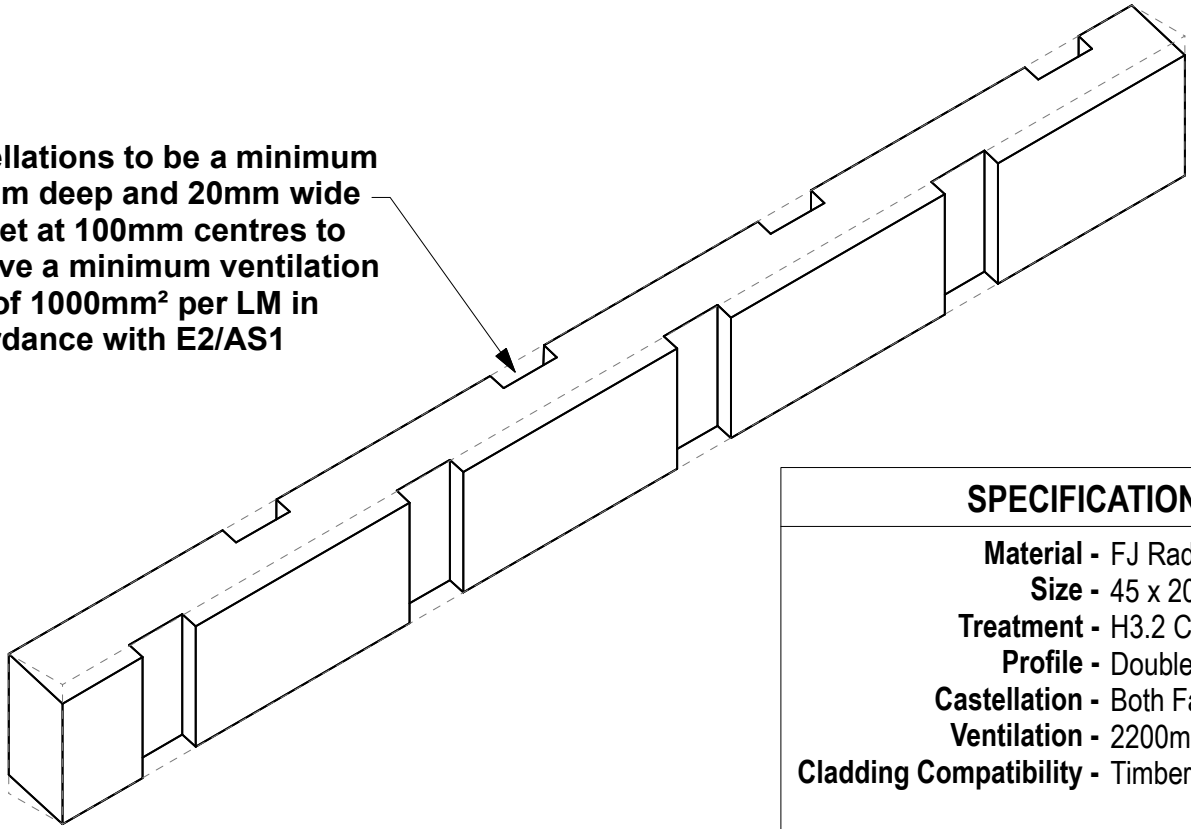
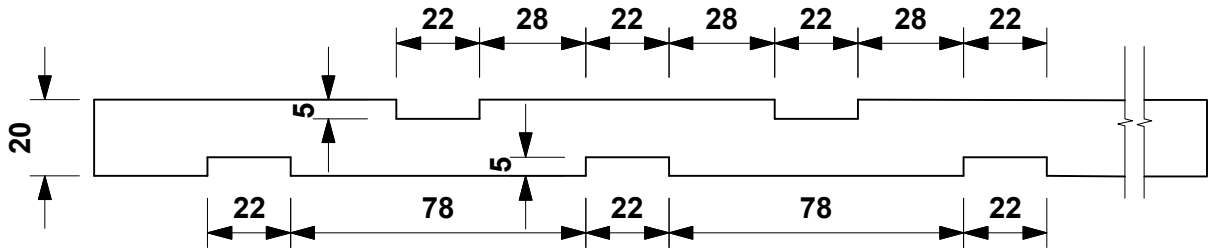


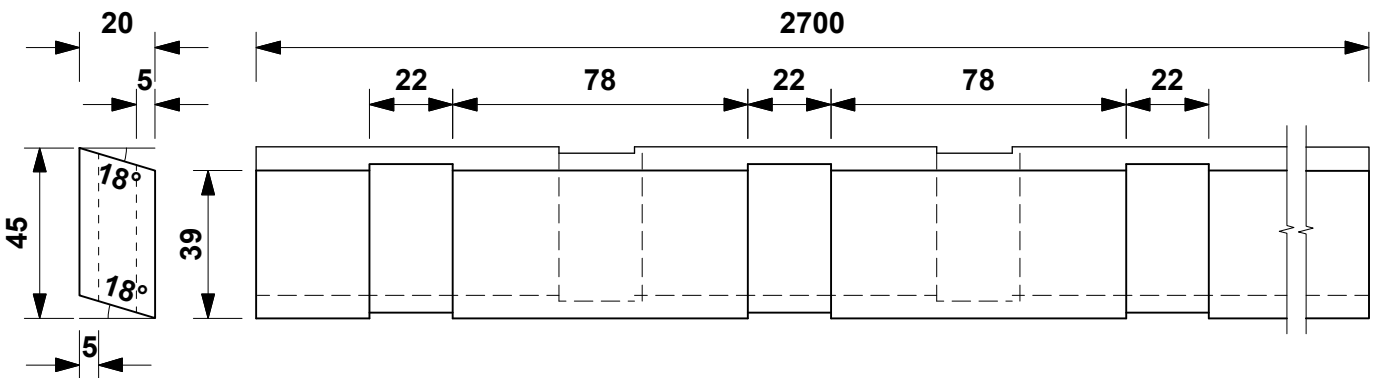
Castellations to be a minimum of 5mm deep and 20mm wide and set at 100mm centres to achieve a minimum ventilation area of 1000mm² per LM in accordance with E2/AS1



SPECIFICATIONS	
Material	- FJ Radiata Pine
Size	- 45 x 20mm
Treatment	- H3.2 CCA
Profile	- Double Bevel
Castellation	- Both Face
Ventilation	- 2200mm ² per l/m
Cladding Compatibility	- Timber



TOP VIEW



END VIEW

SIDE VIEW

DO NOT SCALE OFF THIS DRAWING

EB4

EZYScribe PRODUCTS
 38 ANVIL ROAD
 SILVERDALE
 AUCKLAND
 TEL 09 424-8109



CASTELLATED TIMBER CAVITY BATTEN

2.7m lengths